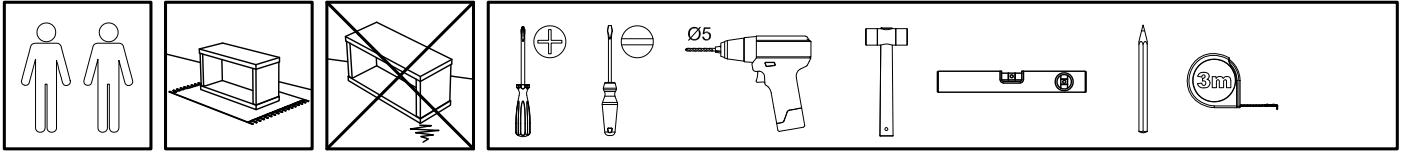


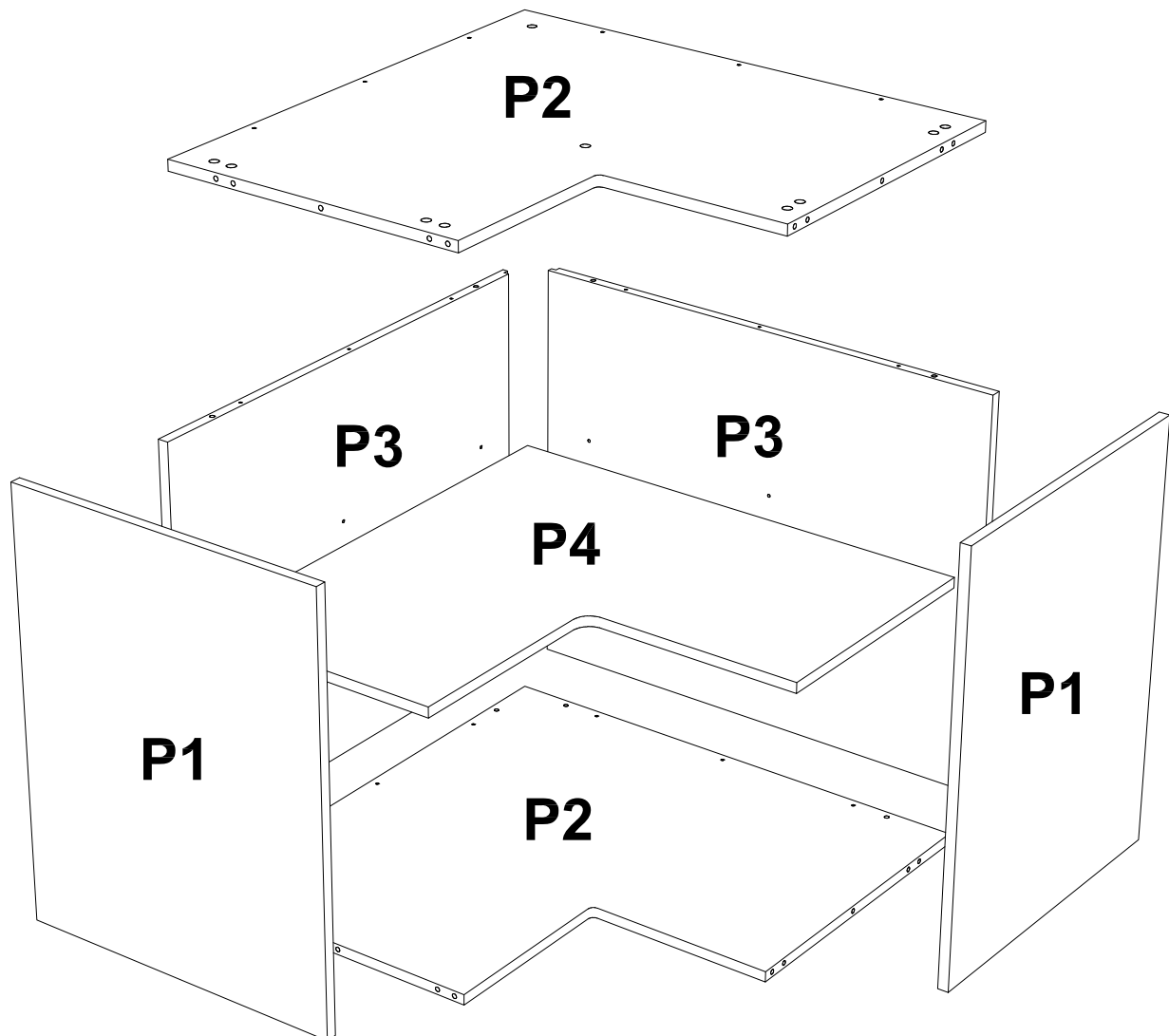
# Excel-Cab

## L-SHAPE CORNER BASE CABINET



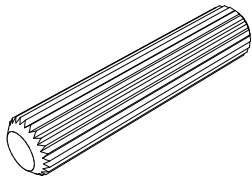
### ASSEMBLY INSTRUCTIONS

Please read these instructions fully before starting assembly

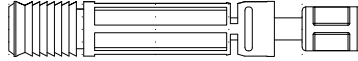
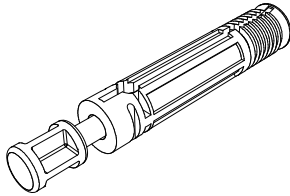


0 1 2 3 4 5 [cm]

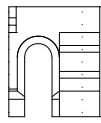
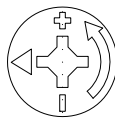
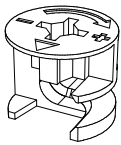
**A** x20



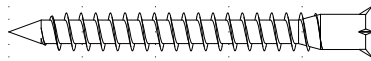
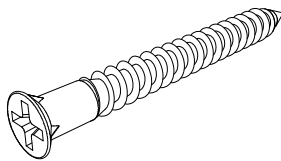
**B** x8



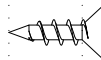
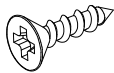
**C** x8



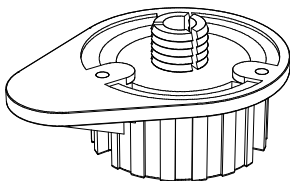
**E** x12



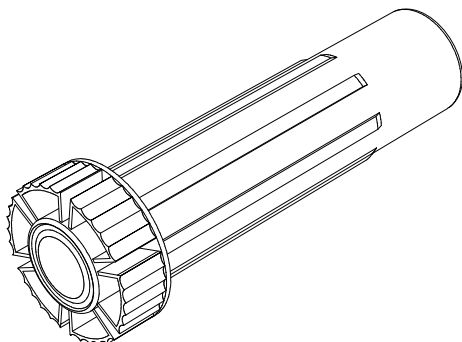
**F** x18



**V** x6

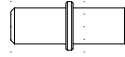
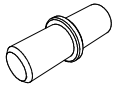


**W** x6

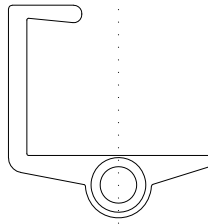
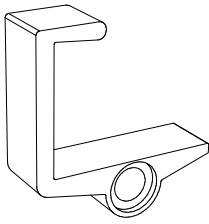


0 1 2 3 4 5 [cm]

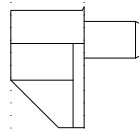
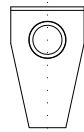
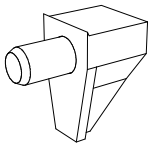
ⓐ x2



ⓑ x2



ⓒ x6



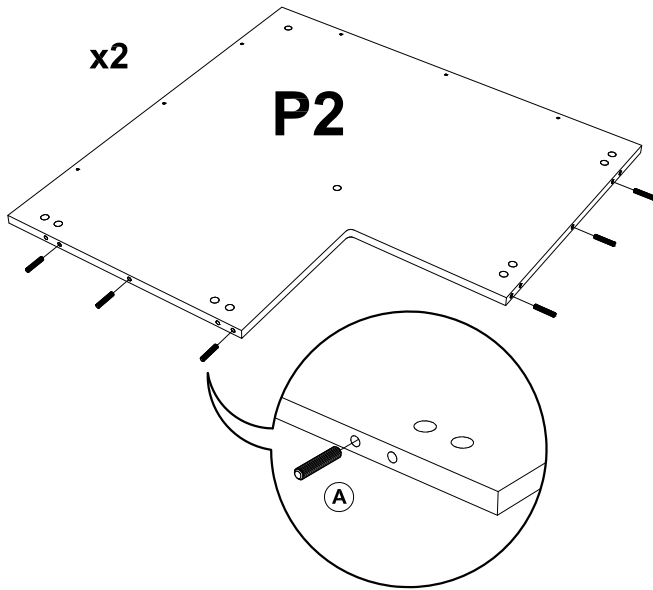
ⓓ x12



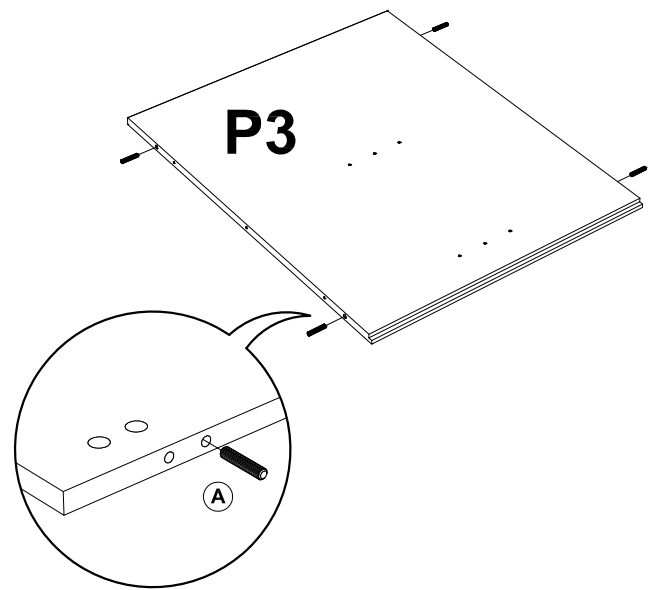
ⓔ



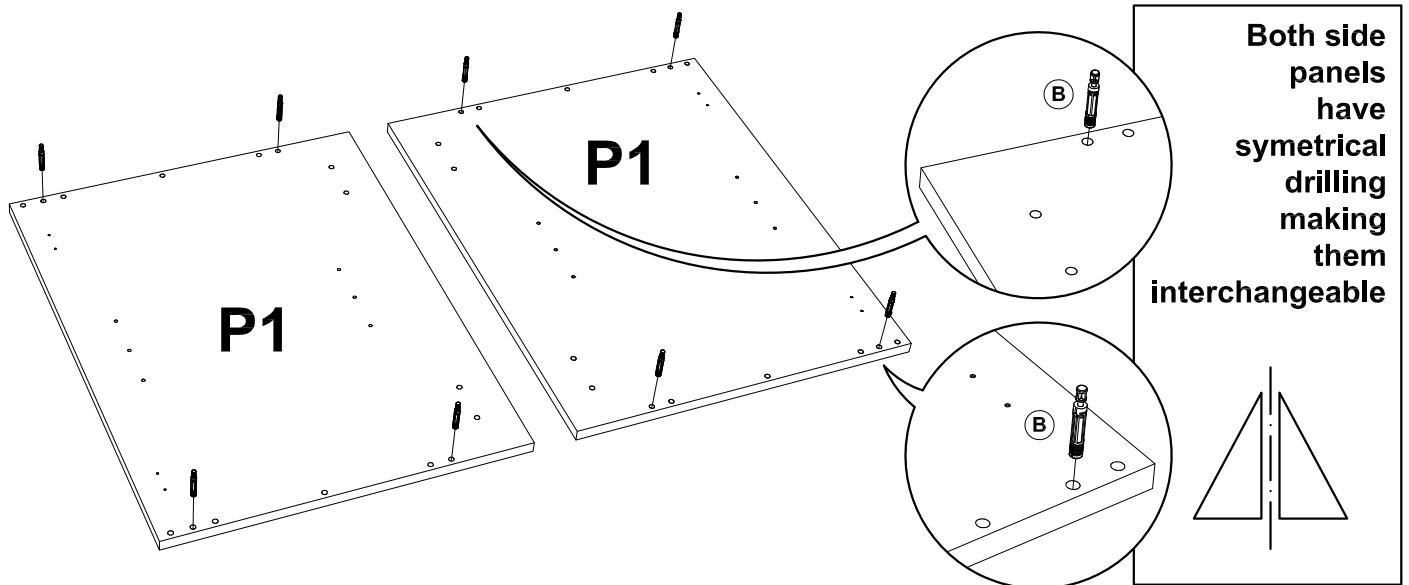
1



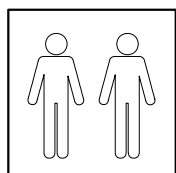
2



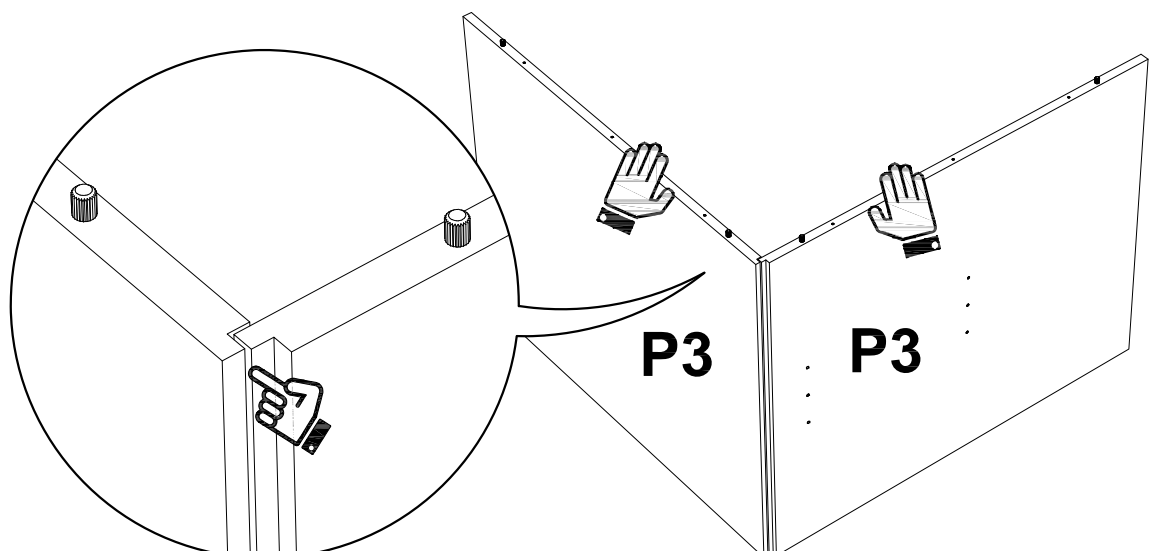
3



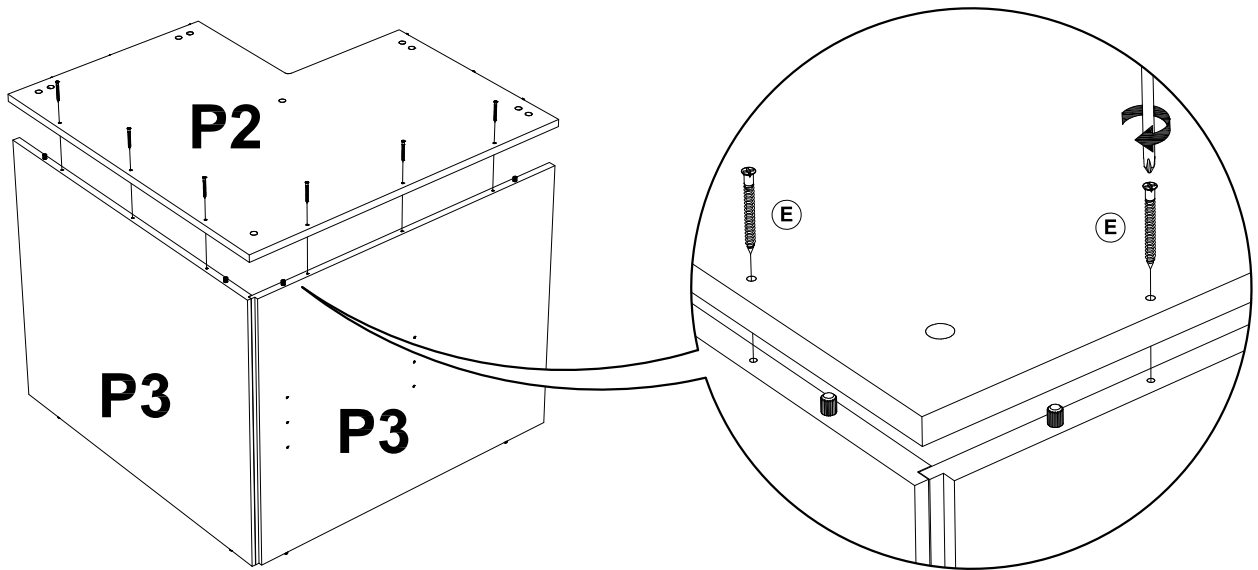
4



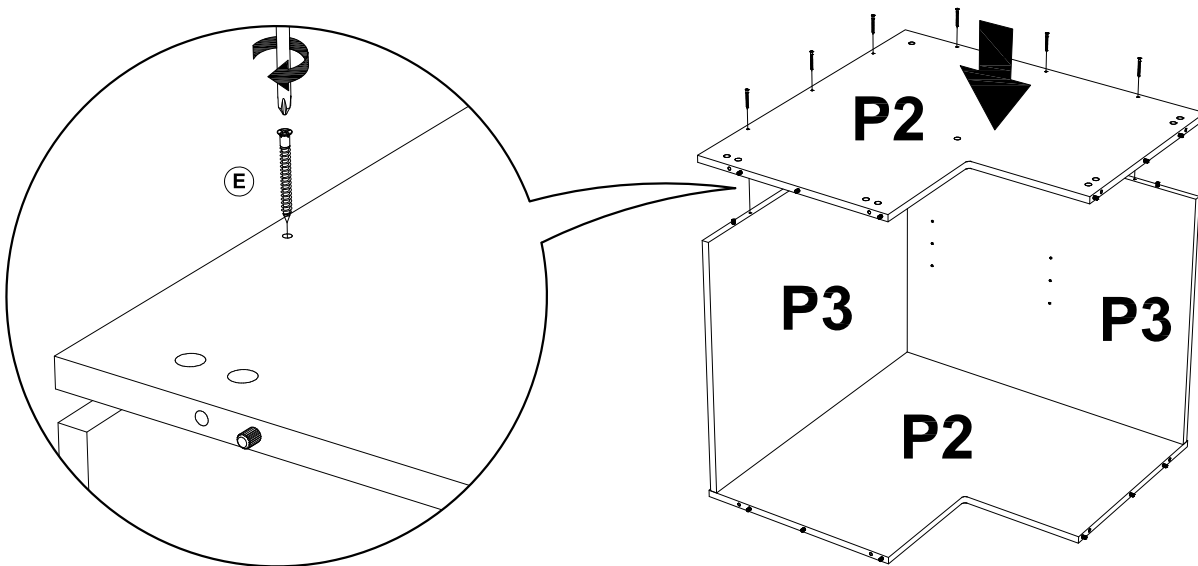
Teamwork  
is better  
and safer



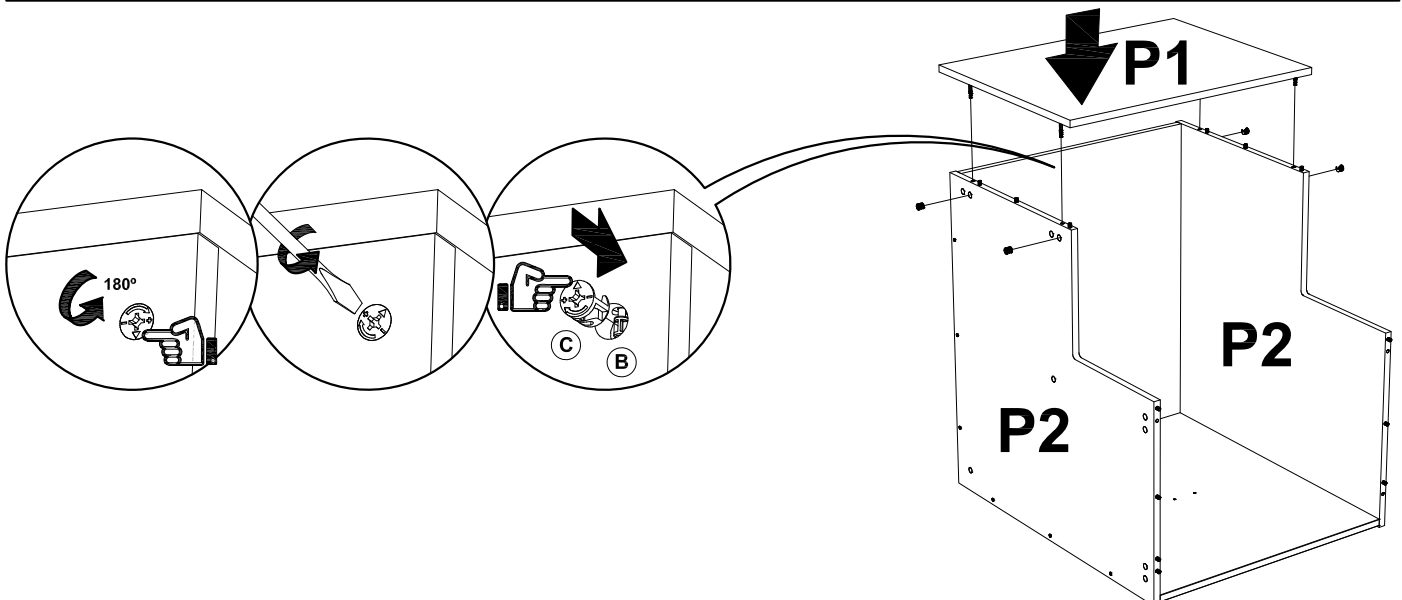
5



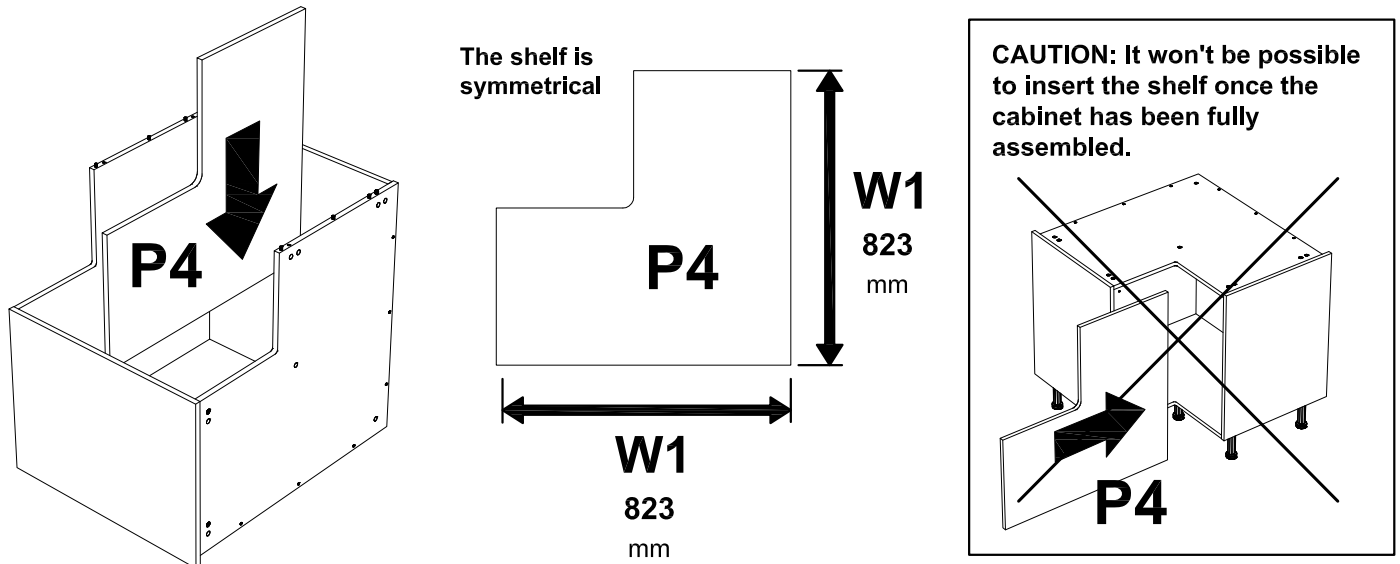
6



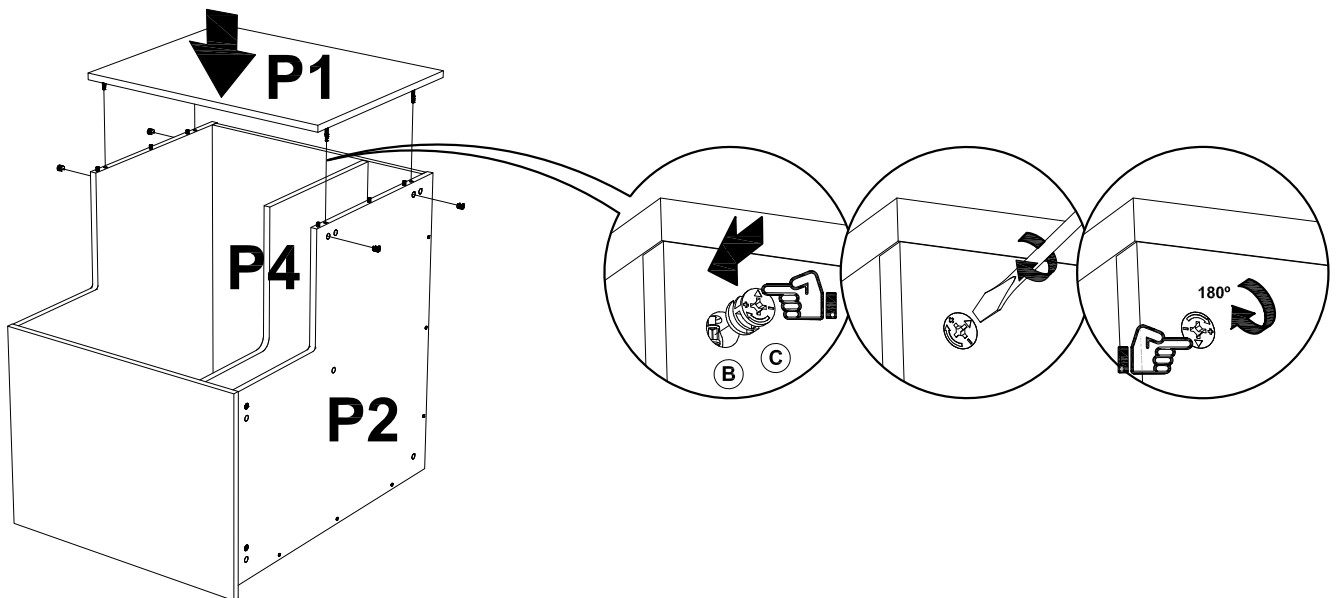
7



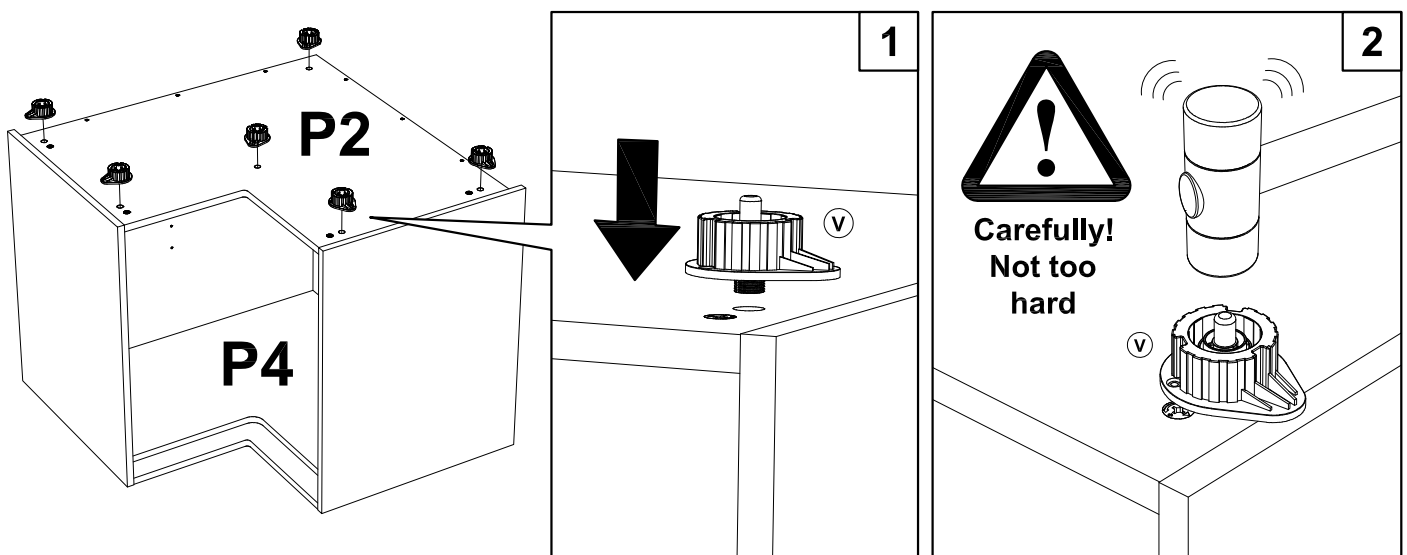
8



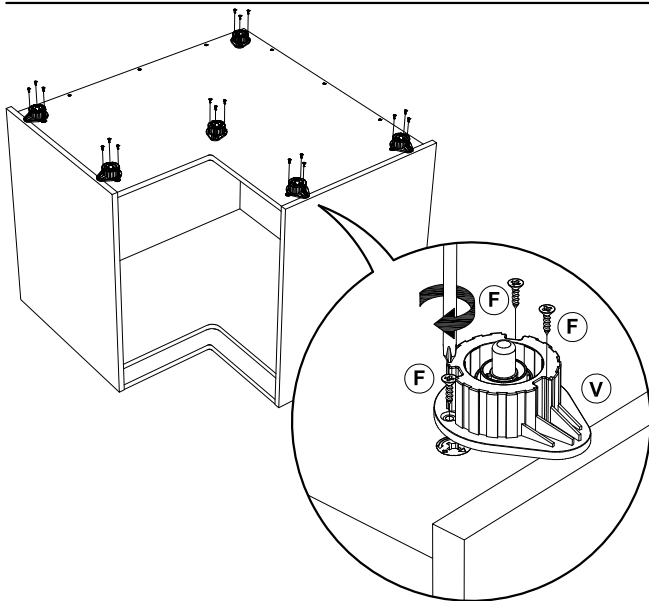
9



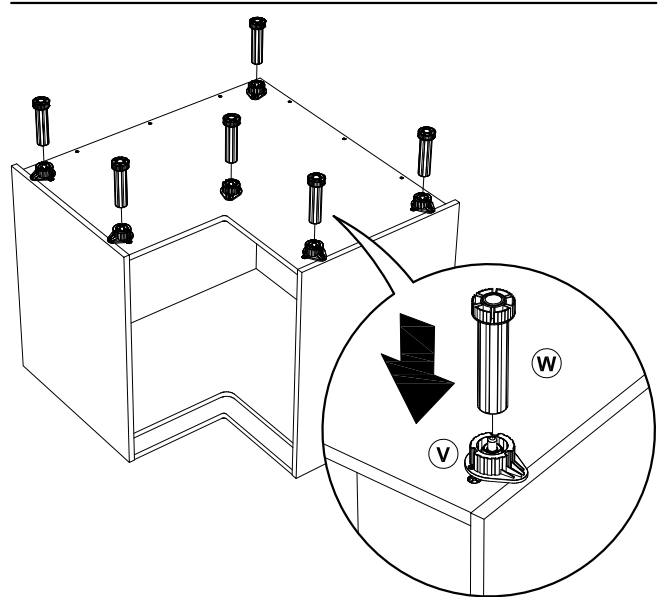
10



11



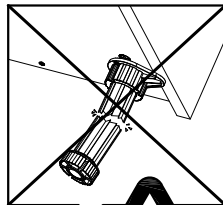
12



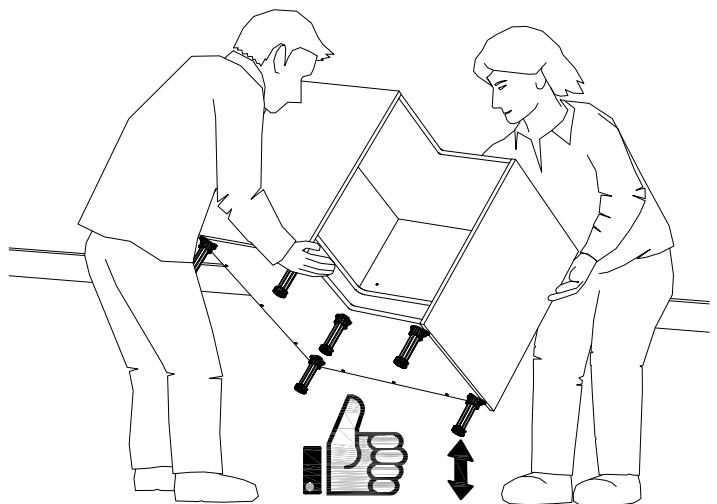
13



**Teamwork  
is better  
and safer**



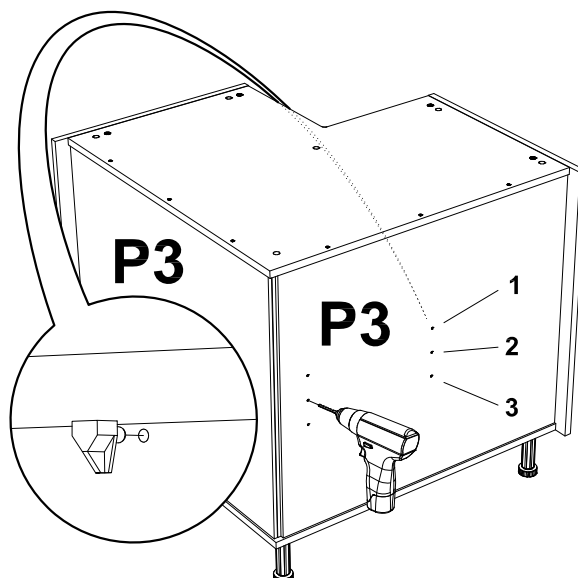
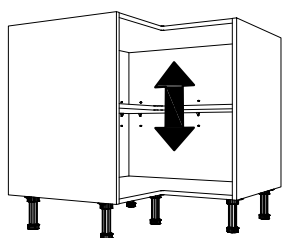
**IMPORTANT**  
Loading the full  
weight of the cabinet  
on the legs while  
lifting can cause the  
legs to break.



14

**SHELF  
POSITION?**

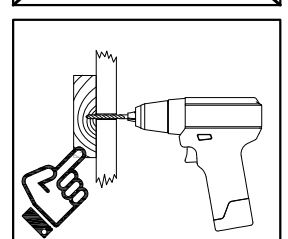
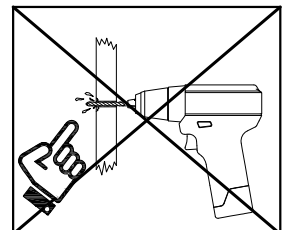
1?  
2?  
3?



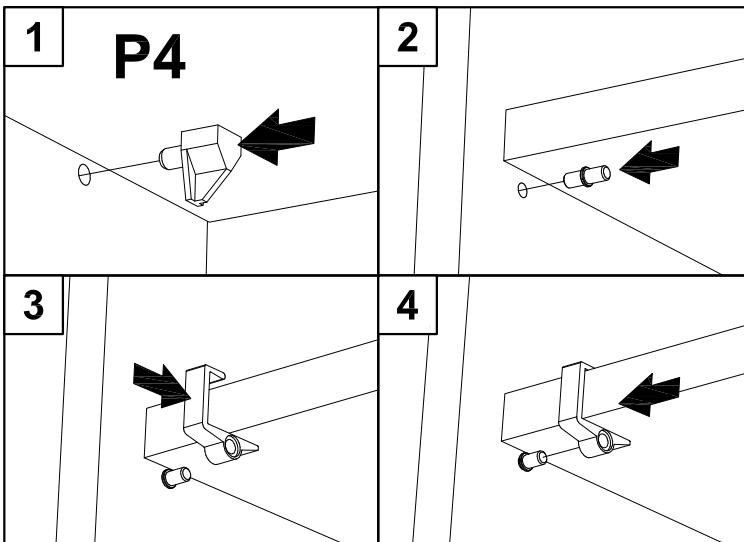
**OPTIONAL: drill back panel  
for extra shelf support**



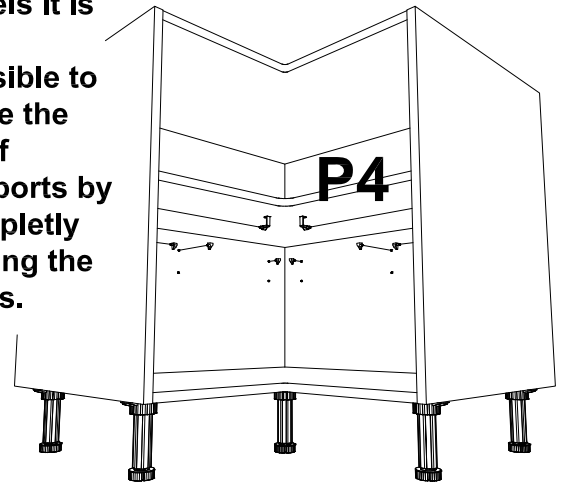
Ø5



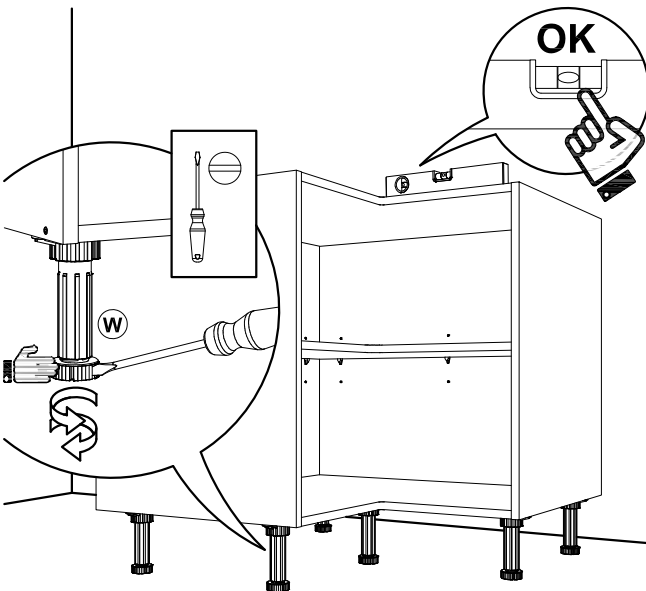
# 15



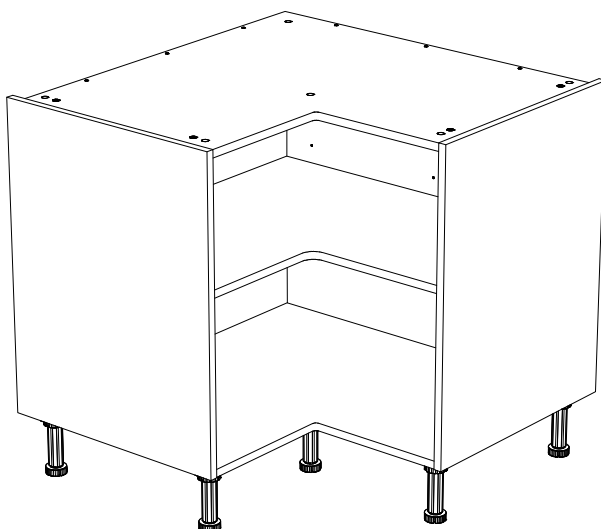
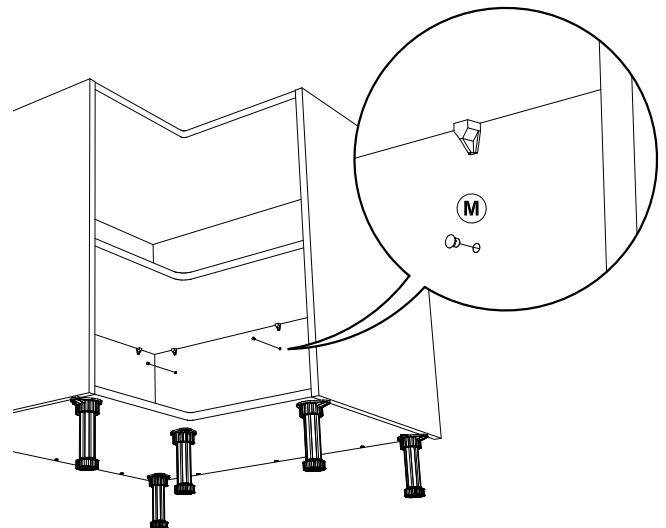
On one of the back panels it is only possible to place the shelf supports by completely drilling the holes.



# 16



# 17



For any aftersales enquiries, please contact the seller with the batch number located on the outer packaging label

<b>X</b>	<b>00</b>	<b>000</b>	<b>0000</b>
A/B/C	00-99	1-366	24h
Batch No.			